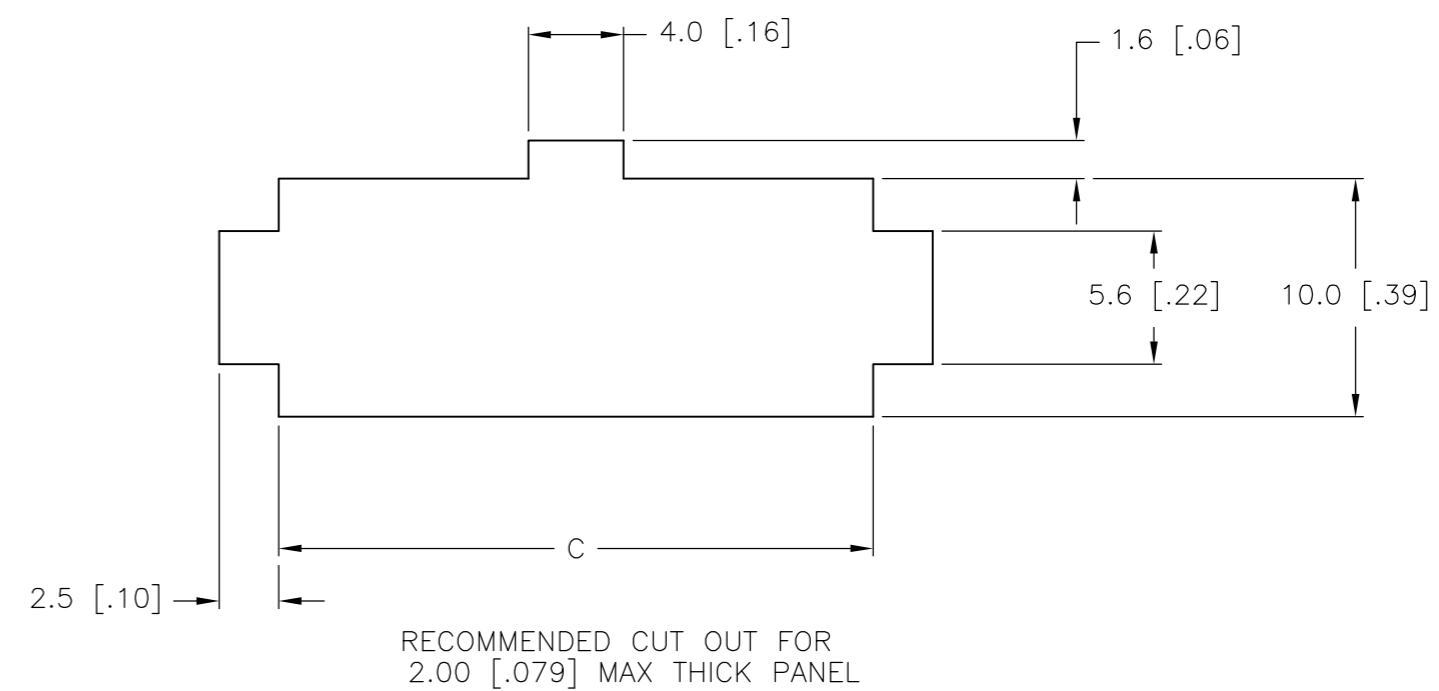
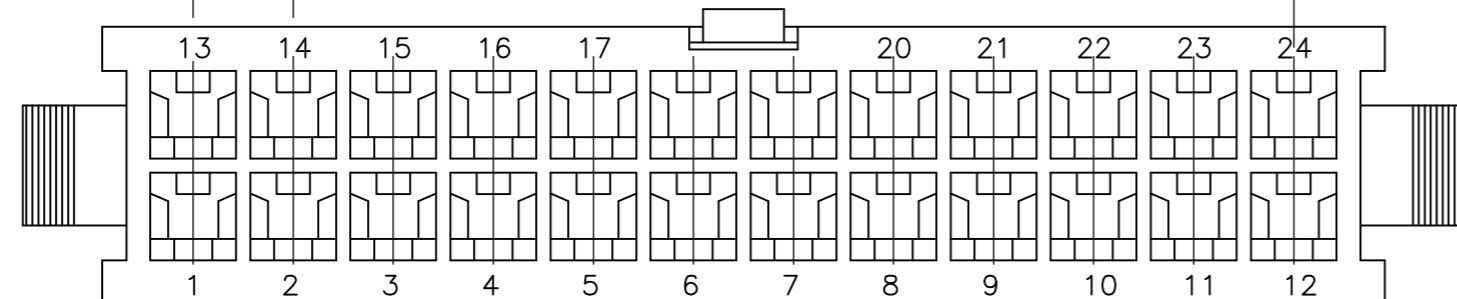
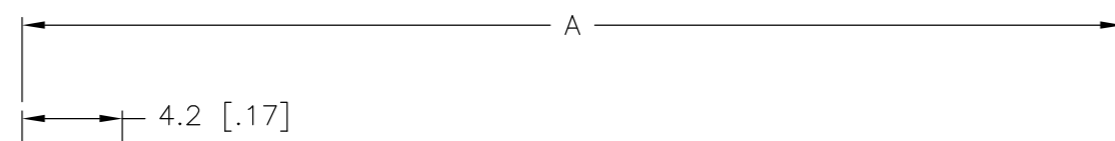
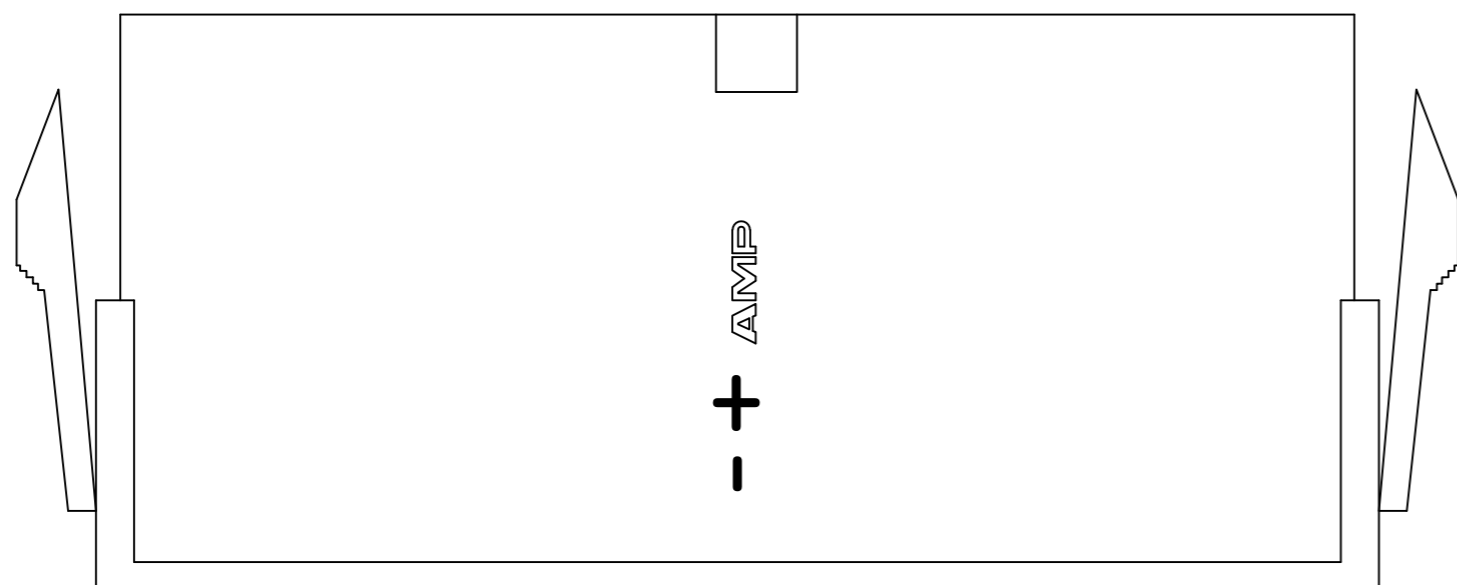
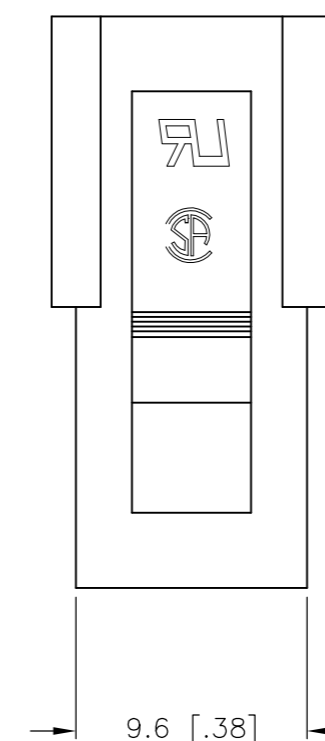
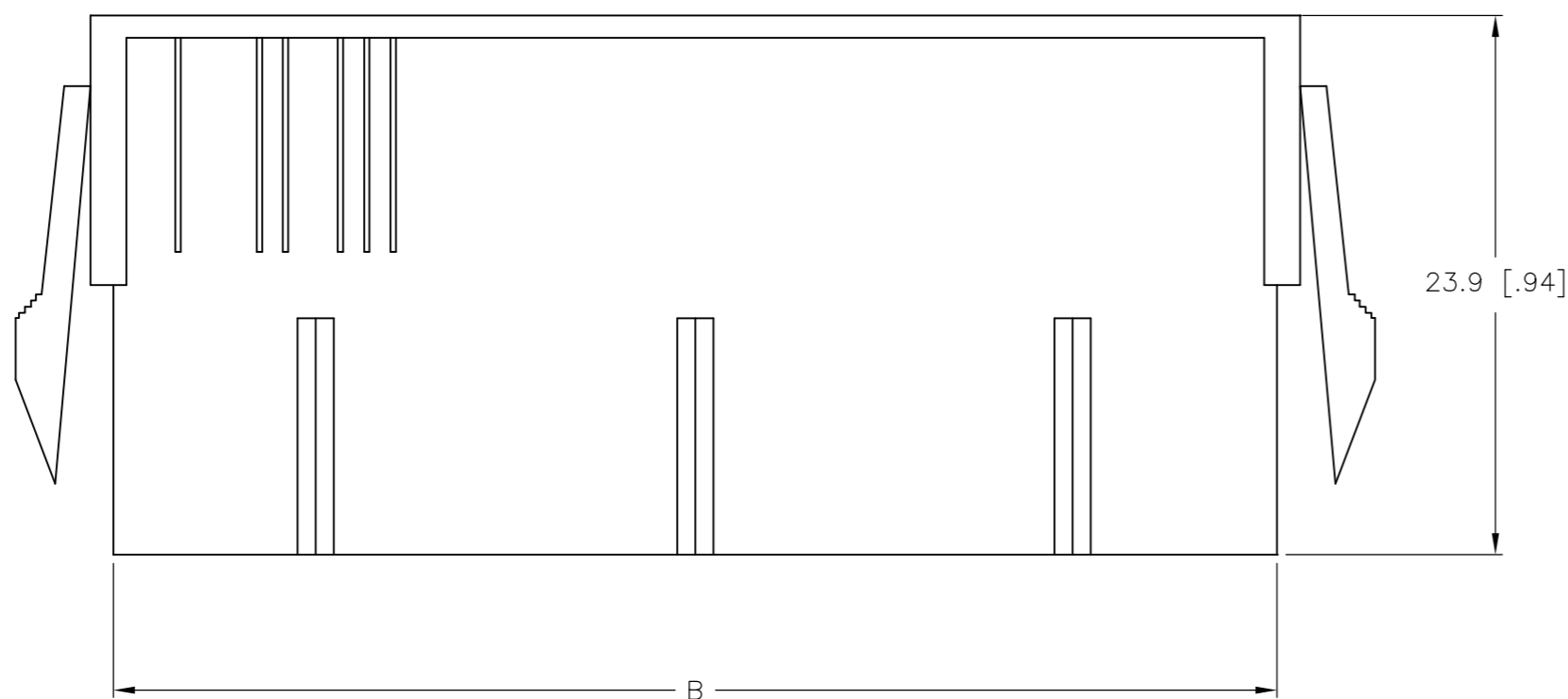
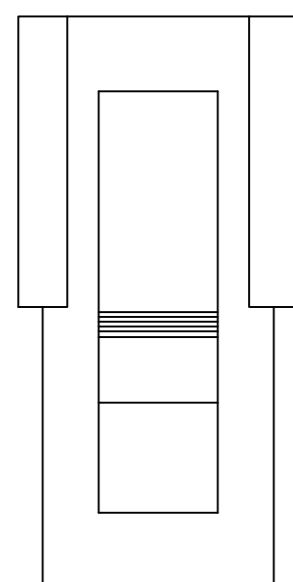


THIS DRAWING IS UNPUBLISHED. RELEASED FOR PUBLICATION  
 © COPYRIGHT BY TYCO ELECTRONICS CORPORATION. ALL RIGHTS RESERVED.

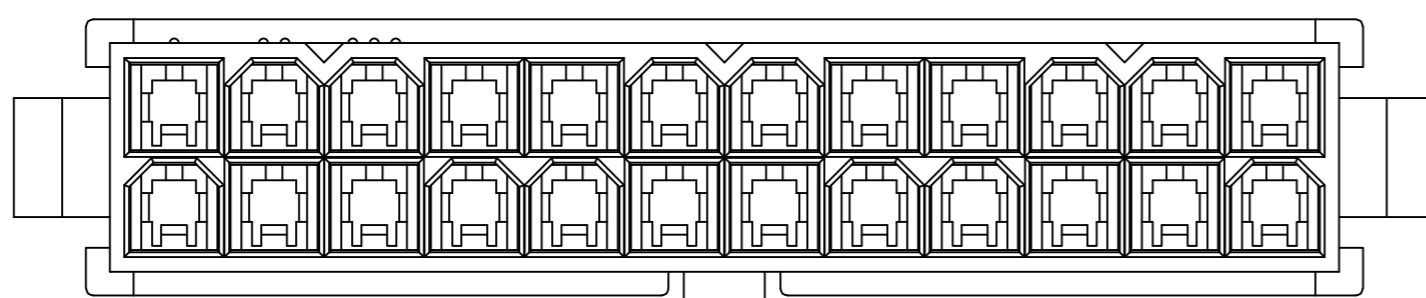
LOC		DIST		REVISIONS			
P	LTR	DESCRIPTION		DATE	DWN	APVD	
B		REVISED PER ECO-08-006888		24MAR08	HMR	CC	



- 1 NYLON, UL94V-2, NATURAL.
- 2 PANEL MUST BE PUNCHED SO THAT THE HOUSING ENTERS THE PANEL IN THE SAME DIRECTION AS THE PUNCH.



52.0	51.6	46.2	24	2-794953-4
47.8	47.4	42.0	22	2-794953-2
43.6	43.2	37.8	20	2-794953-0
39.4	39.0	33.6	18	1-794953-8
35.2	34.8	29.4	16	1-794953-6
31.0	30.6	25.2	14	1-794953-4
26.8	26.4	21.0	12	1-794953-2
22.6	22.2	16.8	10	1-794953-0
18.4	18.0	12.6	8	794953-8
14.2	13.8	8.4	6	794953-6
10.0	9.6	4.2	4	794953-4
5.8	5.4	--	2	794953-2
DIM C	DIM B	DIM A	POS	PART NUMBER



THIS DRAWING IS A CONTROLLED DOCUMENT.		DWN S. HAMM 06-SEP-2001	Tyco Electronics Corporation Harrisburg, PA 17105-3608	
DIMENSIONS: mm [INCHES]		CHK D. COLEY 06-SEP-2001		
TOLERANCES UNLESS OTHERWISE SPECIFIED:		APVD D. COLEY 06-SEP-2001	NAME	
0 PLC ± -		PRODUCT SPEC	PANEL MOUNT PLUG HOUSING, VAL-U-LOK(TM)	
1 PLC ± 0.4[.02]		APPLICATION SPEC	SIZE A2	RESTRICTED TO
2 PLC ± 0.25[.010]		WEIGHT -	CAGE CODE 00779	DRAWING NO C=794953
3 PLC ± 0.150[.0059]		CUSTOMER DRAWING	SCALE -	SHEET 1 OF 1
4 PLC ± -				REV B
ANGLES ± -				
FINISH -				